

Model	: A60H	Perform Date	: OCTOBER ,9 th , 2022
PIN / SN	: VCE0A60HP00320134	SMU Unit	: 9272 Hrs
Plant No	: TD9111	Status Unit	: Operation
Location	: Workshop MMS	Technician	: IMAM SAFI'I
Job Outline	: Test Emission	Reported by	: IMAM SAFI'I

TOOL DATA AND MEASUREMENT CONDITION



- Measurement is taken by TESTO 350 Emission Analyzer tool.
- Measuring port is engine exhaust stack, no after treatment.
- Ambient Temperature is approximately 33 Celcius.
- Measuring Parameters : O2, CO, NOx, NO and NO2.

ENGINE APPLICATION

ENGINE APPLICATION FOR ARTICULATED DUMP TRUCK, TYPE ENGINE IS DIESEL POWER ENGINE 6 CYLINDER IN LINE TYPE WITH TURBOCHARGER AFTERCOOLER.

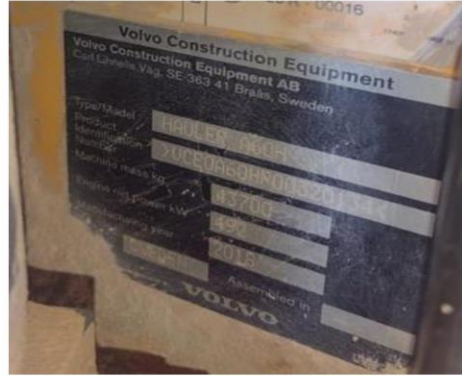
EMISSION TEST
Testo 350 Emission Analyzer Tool

SHOW MACHINE WITH ID NUMBER: TD9111



SHOW SN MACHINE WITH NUMBER :

VCE0A60HP00320134



SHOW HM MACHINE WITH 9272 HRS



SHOW SN ENGINE WITH D16F*116698*A



ACTUAL MEASUREMENT :

LOW IDLE AT 700 RPM

Before Install ECO



PARAMETER	%	ppm	mg/m ³	°C	L/min
O ₂	38.25	-	-	-	
CO	-	28	-	-	
NO _x	-	151.3	-	-	
NO	-	139	-	-	
NO ₂	-	12.3	-	-	
SO ₂	-	116	-	-	
O ₂ ref.	3.0	-	-	-	
FT	-	-	-	142.5	
Pump					0.93
AT				29.7	

After Install ECO



PARAMETER	%	ppm	mg/m ³	°C	L/min
O ₂	30.06	-	-	-	
CO	-	1	-	-	
NO _x	-	25.1	-	-	
NO	-	24	-	-	
NO ₂	-	1.1	-	-	
SO ₂	-	3	-	-	
O ₂ ref.	3.0	-	-	-	
FT	-	-	-	120.6	
Pump					0.96
AT				29.0	

EMISSION TEST
Testo 350 Emission Analyzer Tool

HIGH IDLE AT 2000 RPM

Before Install ECO



PARAMETER	%	ppm	mg/m ³	°C	L/min
O ₂	38.06	-	-	-	
CO	-	146	-	-	
NOx	-	181.8	-	-	
NO	-	160	-	-	
NO ₂	-	21.8	-	-	
SO ₂	-	110	-	-	
O ₂ ref.	3.0	-	-	-	
FT	-	-	-	165.7	
Pump					0.95
AT				30.1	

After Install ECO



PARAMETER	%	ppm	mg/m ³	°C	L/min
O ₂	29.47	-	-	-	
CO	-	78	-	-	
NOx	-	28.6	-	-	
NO	-	17	-	-	
NO ₂	-	11.6	-	-	
SO ₂	-	0	-	-	
O ₂ ref.	3.0	-	-	-	
FT	-	-	-	165.5	
Pump					0.95
AT				29.0	